



Newsletter

May 2020
Issue 10

Message from Catherine Nalty, Deputy Secretary to the Inquiry

The Inquiry is now into the third month of working from home. Of course this feels very different from working together in Fleetbank and we all miss the opportunity for informal conversations, a brief discussion with Sir Brian, or a chat with a colleague while making a cup of tea. But we were fortunate that the way the Inquiry has been storing investigative material electronically meant we are able to make good progress while working from home. Like many other people we have got used to zoom, hangouts and facetime - as you will see from the photo of a senior team meeting.



Lead Investigator Mike Moore on Inquiry work at local archives

From the early stages of the Inquiry it became apparent that some of the answers would come from local records and not from the many documents held by central government.

The initial identification of a repository, archive or document storage location usually stems from research being conducted in other areas. A review of material held at The National Archives identified a significant number of other places to visit. However, the Inquiry has also received assistance from some individual core participants who had already identified potentially relevant storage locations.

These are often within a local library or museum and are separate from the archives associated with the main clinical health bodies such as the NHS, Department of Health or Government Departments.

Teams of two or more Inquiry staff have been visiting different locations to identify, review and obtain copies of the relevant documents. The process starts with communication with the repository archivists, who have all been very helpful in assisting to identify relevant collections, which have been as varied as minutes of meetings of the management board of a regional health authority to the personal files of a specific retired MP or government minister.

Some locations have provided very little in the way of relevant documents but the process goes some way to show the efforts the Inquiry is making in its determination to establish the facts. We continue to liaise with repositories not yet visited and the search will resume again once the current restrictions are lifted. In the meantime, we are analysing the huge amount of material we have already gathered.



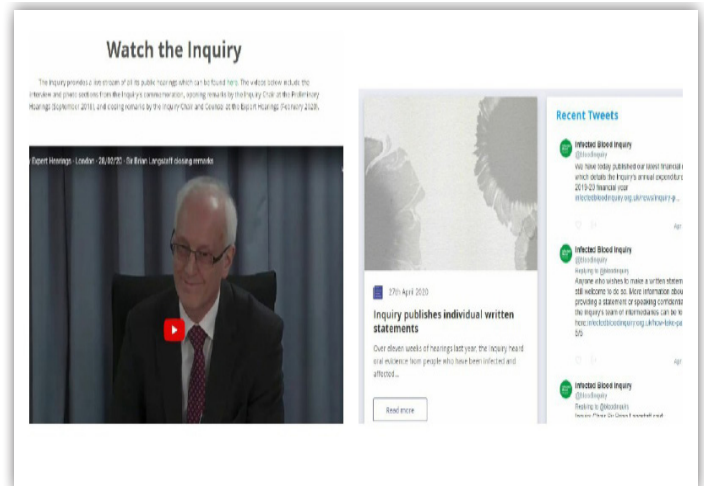
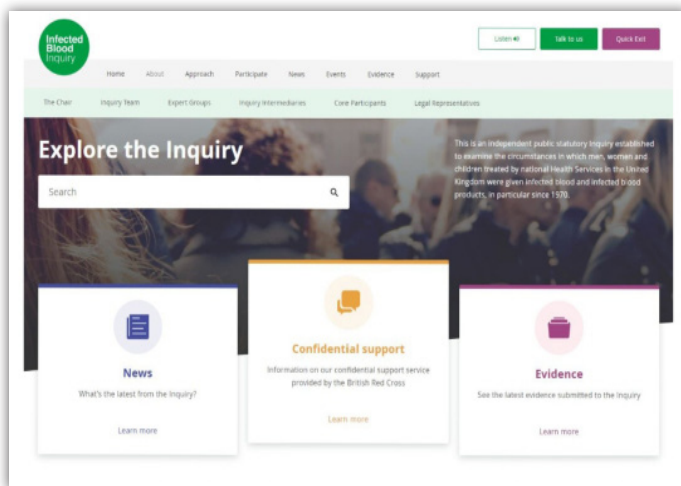
A snapshot of visited archives. From top to bottom: Gwent Archives, Tyne & Wear Archives, Stirling University & The Public Record Office of Northern Ireland

Inquiry launches new homepage

We hope you like the new look of the Inquiry website, that it will be easier to use, and to find items you are interested in. Some of the new features include:

- More information at the top of the homepage, e.g. under “About” you can find items about the expert groups, legal representatives and the intermediaries
- Our news listings page now includes filters so you can search for an item on a particular subject
- Buttons at the bottom of the homepage take you directly to the Inquiry’s Twitter and YouTube pages
- Some short videos from hearings and the commemoration in September 2018
- Google Map and Citymapper functions on the Get in Touch page
- A Quick Exit button so you can leave the site quickly, in case of any privacy concerns.

And on the subject of privacy, we can assure you that the photo used on the homepage is from a photo library and not from an Inquiry event. Please let us have any feedback about your experience with the website.



Infected Blood Inquiry contact details

Tel: 0808 169 1377

Email: contact@infectedbloodinquiry.org.uk

Address:

Fleetbank House, 1st Floor, 2-6 Salisbury Square, London EC4Y 8AE

Twitter: @bloodinquiry

Website: www.infectedbloodinquiry.org.uk

British Red Cross Confidential Support line

Tel: 0800 458 9473 or 0203 417 0280 at these times:

Monday between 11am - 1pm;

Wednesday between 7pm - 9pm; and

Friday between 2pm - 4pm.

Or leave a message any time and you will receive a call back as soon as possible